

metriOs

OPTICAL MEASUREMENT ON THE SHOPFLOOR

# metrios

## A NEW SHOPFLOOR OPTICAL MEASURING MACHINE

An **ALL-IN-ONE** solution with countless benefits.

Cuts measuring time, providing an **INSTANT REPORT** useful for:

- validating the product under inspection
- setting machining centers
- checking the batch to prevent downtime.

Eliminates human error, providing **ACCURATE RESULTS WITH A SIMPLE CLICK.**

Enables **MULTIPLE MEASUREMENTS** such as:

distances, radii, diameters, angles, linearity, roundness and elements constructed on virtual lines which are difficult to detect with normal shopfloor machinery.

With its specific tools, Metrios is an **EXTREMELY RAPID SYSTEM** even for complex measurements.

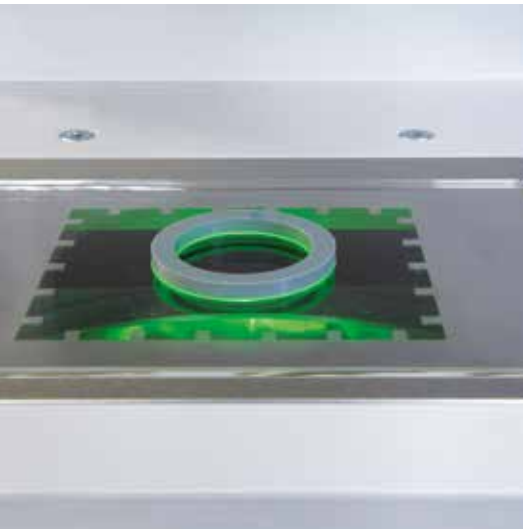




## MAXIMUM VERSATILITY NO MEASUREMENT LIMITS

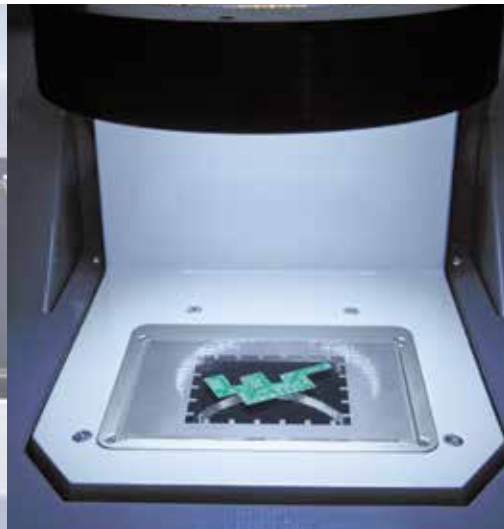
### **TELECENTRIC BACKLIGHTING**

Maximum accuracy and minimum environmental conditioning.



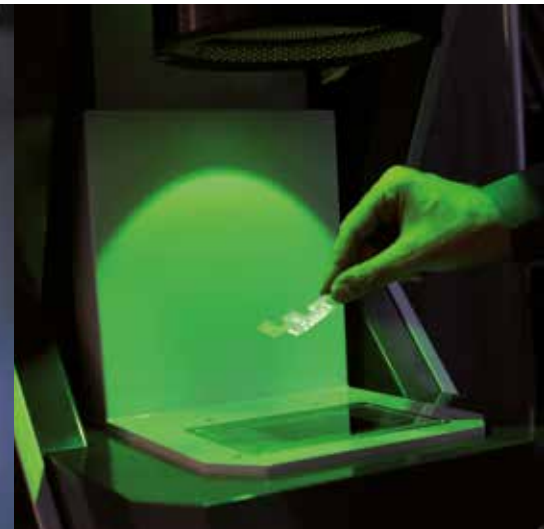
### **ANNULAR ILLUMINATION**

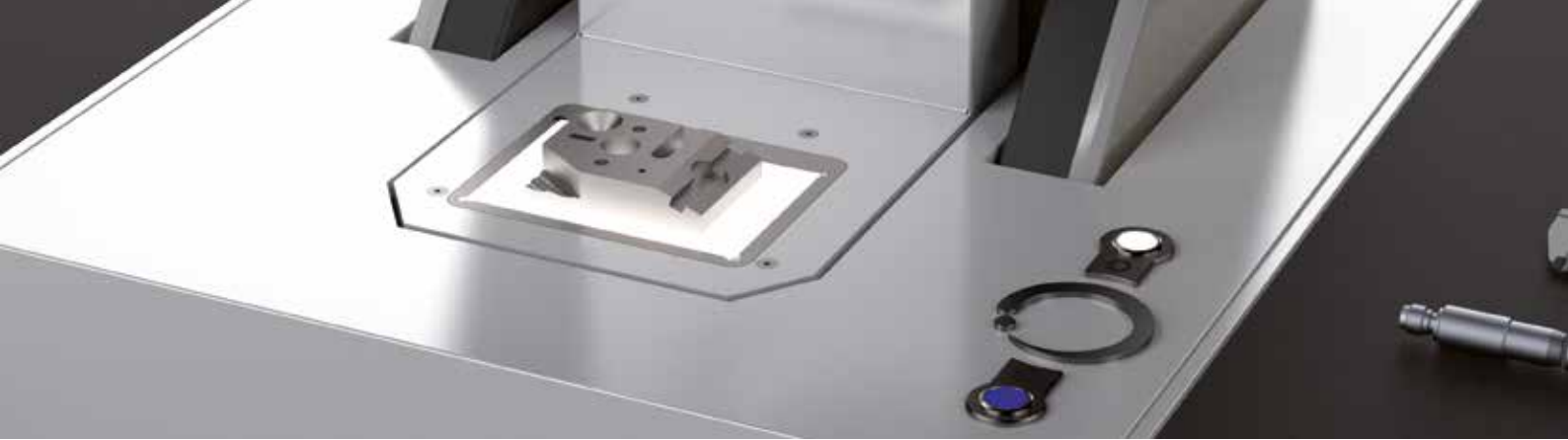
16-sector illumination with up to 640 light points on two independently configurable and high-intensity sources to eliminate environmental conditioning.



### **COAXIAL EPISCOPIC ILLUMINATION**

Provides telecentric illumination without reducing or impeding access to the work surface.





### **VERTICAL ADJUSTMENT OF MEASURING STAGE**

100 mm range of adjustment, unique in its category, for measuring thick elements.

### **INDEPENDENT ANNULAR ILLUMINATION SYSTEM**

Independent from both the optics and the plane of focus. The angle of incidence of the lights can be adjusted without any restrictions.



# metriOS

## SUITABLE FOR ANY PRODUCTION ENVIRONMENT

Entire **STEEL  
EXOSKELETON  
FRAME** protecting  
a technological  
heart



*Optional*  
**RETROILLUMINATED**  
panel





Option to connect  
**EXTERNAL MEASURING  
TOOLS** by usb port

Onboard **CALCULATION AND  
ELECTRONIC UNITS, PROTECTED**  
from external environment

Industrial 17"  
**MULTI-TOUCH  
SCREEN**

**3 DIFFERENT  
TEMPERATURE  
SENSORS** to protect  
from thermal shock

**SIMPLIFIED  
INTERFACE,**  
no training  
required

*Optional*  
second  
monitor and  
keyboard

Onboard  
patented  
**STEP MASTER**  
provides  
continuous  
calibration  
feedback and  
prevents drifts

**WORK  
STATION**  
on wheels

# metrios

- Vision unit made up of telecentric illuminator, coaxial telecentric episcopic illuminator, 16-sector annular illuminator - 8 external oblique angle and 8 internal gradual angle.
- Matrix camera on telecentric lens with 85x75mm measuring field.
- The stage movement group is made up of a vertical linear axis activated by a brushless motor.
- Slide with annular illuminator on prismatic guide with vertical adjustment and position indicator.
- Multi-touch PC with Windows 7 or upgrade.
- Metrios application for the management and maintenance of the measurement station, for analysis configuration and for the display and archiving of measurement results. Configuration is user friendly, with measurements made directly on the image.

Model		Metrios M1
Maximum X-Y axis measurement dimensions	mm	60x75
Maximum load dimension on Z axis	mm	100
Maximum load weight	kg	0,8
Measurement accuracy	µm*	5
Measurement repeatability	µm*	2
Machine weight	kg	95
Power supply	V-Hz	230-50/60
LxWxH	mm	400x800x900
Requires a welded steel table or granite surface (recommended size) LxWxH	mm	500x850x700

\*The data refer to measurements carried out at 20°C on clean and rectified surfaces.  
The data may be affected by the shape and state of the piece surface.



TECHNICAL DETAILS AVAILABLE AT  
[www.metrios.net](http://www.metrios.net)



metriOs

VIA J. GUTENBERG, 5 - 47822 SANTARCANGELO DI ROMAGNA (RN) - ITALY  
TEL. +39 0541 350411 - FAX +39 0541 623897 - [INFO@METRIOS.NET](mailto:INFO@METRIOS.NET)